



Nissan Intelligent Mobility moves you one step ahead. In cars that feel like an extension of you, helping you see more and sense more, reacting with you, and sometimes even for you. Nissan Intelligent Mobility is about a better future — moving us to a world that’s safer, more sustainable, and exciting.



QASHQAI®

2023



¹Availability of features vary by vehicle model year, model, trim level, packaging, and options. Please see Owner’s Manual for important feature information. ²Available feature. ³Intelligent All-Wheel Drive cannot prevent collisions or provide enhanced traction in all conditions. Always monitor traffic and weather conditions. ⁴Driving is serious business and requires your full attention. If you have to use the connected device while driving, exercise extreme caution at all times so full attention may be given to vehicle operation. Smartphone or other external device not included. ⁵Leather appointments. ⁶Remote Engine Start System to be used only in accordance with laws or rules in effect in your vehicle’s location. ⁷Driving is serious business and requires your full attention. If you have to use the feature while driving, exercise extreme caution at all times so full attention may be given to vehicle operation. ⁸Feature availability is dependent on vehicle model, trim level, packaging and options. Compatible connected device may be required and feature availability may be dependent on device’s capability. Refer to connected device’s Owner’s Manual for details. Late availability for some features. Driving is serious business and requires your full attention. Only use features and connected devices when safe and legal to do so. Some features, including automatic crash notification and SOS, are dependent upon the telematics device being in operative condition, its ability to connect to a wireless network, compatible wireless network availability, navigation map data and GPS satellite signal receptions, the absence of which can limit or prevent the ability to reach Customer Care or receive support. GPS mapping may not be detailed in all areas or reflect current road status. Never program GPS while driving. Only use Remote Engine Start and Remote Horn features in accordance with any laws, rules or ordinances in effect in your vehicle’s location. Some services and features are provided by independent companies not within Nissan’s control. **Should service provider terminate or restrict service or features, service or features may be suspended or terminated without notice or with no liability to Nissan or its partners or agents.** Services and features may require compatible cellular network provided by independent companies not within Nissan or its partners’ or agents’ control. Cellular network signal strength may vary and may not be available in all areas or at all times. Services and features may not function if cellular network is unavailable, restricted, or terminated. Nissan and its partners or agents are not responsible for associated costs or other third party changes that may be required for continued operation due to cellular network unavailability, restriction, or termination (including equipment replacements/upgrades, if available, or roaming charges on alternative networks). Technology is evolving, and changes by independent companies are not within Nissan’s or its partners’ or agents’ control. Enrollment, owner consent, personal identification number (PIN), and subscription agreement may be required to receive full suite of features and services. Trial periods (if applicable) begin on the date of vehicle purchase or lease of a new Nissan. Trial periods may be subject to change at any time and may be subject to early termination without notice. Required subscriptions may be sold separately for each available feature or service after trial period ends, and may continue until you call service provider to cancel. Installation costs, one-time activation fee, other fees and taxes may apply. Fees and programming subject to change. Feature may be subject to age restrictions in some areas. Subscriptions governed by service provider’s subscription agreement, terms and conditions and privacy statements available at service provider’s website. Text rates or data usage may apply. The Nissan names, logos and slogans are trademarks owned by or licenced to Nissan Motor Co. Ltd. or its North American subsidiaries. Other trademarks and trade names are those of their respective owners. **For important safety information, system limitations, and additional operating and feature information, see Dealer or Owner’s Manual.** ⁹Use the text messaging feature after stopping your vehicle in a safe location. If you have to use the feature while driving, exercise extreme caution at all times so full attention may be given to vehicle operation. Compatible smartphone required. Text rates and/or data usage may apply. ¹⁰Never program while driving. GPS mapping may not be detailed in all areas or reflect current road status. ¹¹Cargo shown for display purposes only. Cargo and load capacity limited by weight and distribution. Always secure cargo. Heavy loading of the vehicle with cargo, especially on the roof, will affect the handling and stability of the vehicle. ¹²Nissan advanced safety technologies can’t prevent all collisions or warn in all situations. See Owner’s Manual for important safety information. ¹³Intelligent Emergency Braking with Pedestrian Detection cannot prevent all collisions and may not provide warning or braking in all conditions. Driver should monitor traffic conditions and brake as needed to prevent collisions. See Owner’s Manual for safety information. ¹⁴Rear Automatic Braking cannot prevent all collisions and may not provide warning or braking in all conditions. Driver should always turn and check surroundings before driving and brake as needed to prevent collisions. See Owner’s Manual for safety information. ¹⁵Rear Cross Traffic Alert may not detect all vehicles. See Owner’s Manual for safety information. ¹⁶Blind Spot Warning cannot prevent collisions and may not detect every object or warn in all situations. Driver should always turn and look before changing lanes. See Owner’s Manual for safety information. ¹⁷Lane Departure Warning and Intelligent Lane Intervention only operate when lane markings are able to be detected. See Owner’s Manual for safety information. ¹⁸ProPILOT Assist cannot prevent collisions. It is the driver’s responsibility to be in control of the vehicle at all times. Always monitor traffic conditions and keep both hands on the steering wheel. System operates only when lane markings are detected. Does not function in all weather, traffic and road conditions. System has limited control capability and the driver may need to steer, brake or accelerate at any time to maintain safety. See Owner’s Manual for safety information. ¹⁹Intelligent Forward Collision Warning cannot prevent collisions. See Owner’s Manual for safety information. ²⁰Virtual composite 360° view. ²¹Intelligent Around View® Monitor cannot eliminate blind spots and may not detect every object. Driver should always turn and check surroundings before driving. See Owner’s Manual for safety information. ²²Traffic Sign Recognition (TSR) may not detect and read all traffic signs in all conditions. Driver should monitor all traffic signs and obey all traffic laws. ²³Extra cost option. ²⁴Genuine Nissan Accessory Roof Rail Crossbars have a maximum weight limit of 100 lbs. (45 kg). ²⁵Whichever occurs first. ²⁶The Rear Sonar System is a convenience, but is not a substitute for proper backing procedures. Always turn and check that it is safe to do so before backing up. May not detect every object behind you. ²⁷Intelligent Trace Control cannot prevent collisions or loss of control. Driver should remain in control of vehicle at all times. See Owner’s Manual for safety information. ²⁸Vehicle Dynamic Control cannot prevent collisions due to abrupt steering, carelessness, or dangerous driving techniques. It should remain on when driving, except when freeing the vehicle from mud or snow. See Owner’s Manual for safety information. ²⁹Information displayed is dependent on how vehicle is equipped. Driving is serious business and requires your full attention. If you have to use the feature while driving, exercise extreme caution at all times so full attention may be given to vehicle operation. ³⁰Availability of specific features is dependent upon the phone’s Bluetooth® support. Please refer to your phone Owner’s Manual for details. Bluetooth® word mark and logos are owned by Bluetooth SIG, Inc., and any use of such marks by Nissan is under licence. ³¹XM® and SiriusXM® Satellite Radio is available in the 10 Canadian provinces and the 48 contiguous United States. Subscription sold separately after trial period. All subscriptions subject to customer agreement at siriusxm.ca/terms. All fees and programming subject to change. ©2023 Sirius XM Canada Inc. The Sirius,® XM,® and SiriusXM® names and all related marks and logos are trademarks of Sirius XM Radio Inc. All other trademarks are the property of their respective owners. ³²RearView Monitor may not detect every object and does not eliminate blind spots or warn of moving objects. See Owner’s Manual for safety information. ³³Does not detect people or cargo. Always check rear seat before exiting. See Owner’s Manual for safety information. ³⁴Tire Pressure Monitoring System is not a substitute for regular tire pressure checks. See Owner’s Manual for safety information. ³⁵Vehicle must be on for the Easy-Fill Tire Alert to operate. ³⁶Airbags are only a supplemental restraint system. Always wear your seat belt. Rear-facing child restraints should not be placed in the front-passenger’s seat. All children 12 and under should ride in the rear seat properly secured in child restraints, booster seats, or seat belts according to their size. Airbags will only inflate in certain accidents. See Owner’s Manual for safety information. ³⁷Intelligent Cruise Control uses limited braking and is not a collision avoidance or warning system. Driver should monitor traffic conditions and brake as needed to prevent collisions. See Owner’s Manual for safety information. ³⁸Intelligent Driver Alertness cannot provide a warning in every situation. See Owner’s Manual for safety information. ³⁹Brake Assist cannot prevent all collisions and may not provide warning or braking in all conditions. Driver should monitor traffic conditions and brake as needed to prevent collisions. See Owner’s Manual for safety information. ⁴⁰2023 Fuel Consumption Estimate L/100 km (MPG) — 8.6 (33) City / 7.3 (39) Highway / 8.0 (35) Combined for S FWD; 9.0 (31) City / 7.5 (38) Highway / 8.3 (34) Combined for S, SV, and SL AWD. Actual mileage may vary with driving conditions. Use for comparison only. Apple CarPlay® and Siri® are registered trademarks of Apple, Inc. Bluetooth® is a registered trademark of Bluetooth SIG, Inc. Bose® is a registered trademark of The Bose Corporation. Facebook® is a registered trademark of Facebook, Inc. Google, Android, YouTube, and Android Auto are trademarks of Google LLC. To use Android Auto on your car display, you’ll need an Android phone running Android 8 or higher, an active data plan, and the Android Auto app. HomeLink® is a registered trademark of Gentex Corporation. Instagram® is a registered trademark of Instagram, LLC. iPhone® is a registered trademark of Apple, Inc. All rights reserved. iPhone® or other external device not included. Twitter® is a registered trademark of Twitter, Inc. This brochure is intended for general descriptive and informational purposes only. It is subject to change and does not constitute an offer, representation or warranty (express or implied) by Nissan Canada Inc. Interested parties should confirm the accuracy of any information in this brochure as it relates to a vehicle directly with Nissan Canada Inc. before relying on it to make a purchase decision. Nissan Canada Inc. reserves the right to make changes, at any time, without prior notice, in prices, colours, materials, equipment, specifications, and models and to discontinue models or equipment. **Due to continuous product development and other pre- and post-production factors, actual vehicle, materials and specifications may vary from this brochure. Some vehicles shown with optional equipment.** See the actual vehicle for complete accuracy. Availability and delivery times for particular models or equipment may vary. For additional information on availability, options or accessories, see your Nissan dealer or contact Nissan Canada Inc. For more information on Nissan products and services visit nissan.ca. The Nissan names, logos, product names, feature names, and slogans are trademarks owned by or licenced to Nissan Motor Co. Ltd. and/or its North American subsidiaries. Printed in January 2023. Catalogue number: 99999-QAS23EN. ©2023 Nissan Canada Inc. All rights reserved.



Make every trip downtown exhilarating

Thrill with progressive style and a commanding view of the city. Commute with the confidence of drive assist features that can respond to trouble before it messes with your plans.¹ Rain? Snow? Intelligent All-Wheel Drive welcomes it all.^{2,3} And of course, seamless connectivity is a given.⁴ This is the 2023 Nissan Qashqai.[®]



Smart premium

The intuitively laid-out Qashqai® interior is designed to keep up with your life, while generous head and leg room keep the crew happy on longer trips. And thoughtful details, like stitching on the seats and doors, give the space a handcrafted feel.

Nissan Qashqai® SL with Platinum Package shown in Charcoal Leather.⁵

Leather-appointed seats²

Sporty D-shaped heated steering wheel²

Quick Comfort® heated front seats

Nissan Intelligent Key® with Remote Engine Start System^{2,6}

Power sliding glass moonroof²

Street-savvy,
adventure-ready

Calm, cool, connected

NissanConnect® Services² works seamlessly with your compatible smartphone and Qashqai's 178 mm (7") colour touch-screen.^{4,7}



U.S. instrumentation shown.

Cold-weather features



Remote Engine Start System with Intelligent Climate Control On hot days, the Remote Engine Start System with Intelligent Climate Control² can adjust temperature and airflow for a quick cool-down.⁶

On cold days, the system² can adjust airflow to warm up the cabin, defrost the windows and windshield, and can even turn on the heated steering wheel² and outside mirrors.⁶

Quick Comfort® heated front seats Standard Quick Comfort heated front seats not only take the edge off a chilly morning – they also feel great on your back in any weather.



Heated steering wheel Gone are the days of leaving on your gloves in the car, thanks to the heated steering wheel.²



NISSAN
INTELLIGENT
MOBILITY™

People to see? Places to be? Just ask Siri.® Equipped with Siri® voice control, Apple CarPlay® brings on board your contacts, favourite audio apps, Apple Maps, and more. You can even use your steering wheel controls to adjust volume and toggle through screens. Simply plug in your compatible iPhone® and go.^{4,8,9,10}



Works with
Apple CarPlay



works with
androidauto

Talk to Google on Android Auto™ and get things done with your voice. Easily send messages, get directions, control media, and more. Just say, "Hey Google" or, in compatible cars, long-press the voice control button on your steering wheel to get started.^{4,8,9,10}

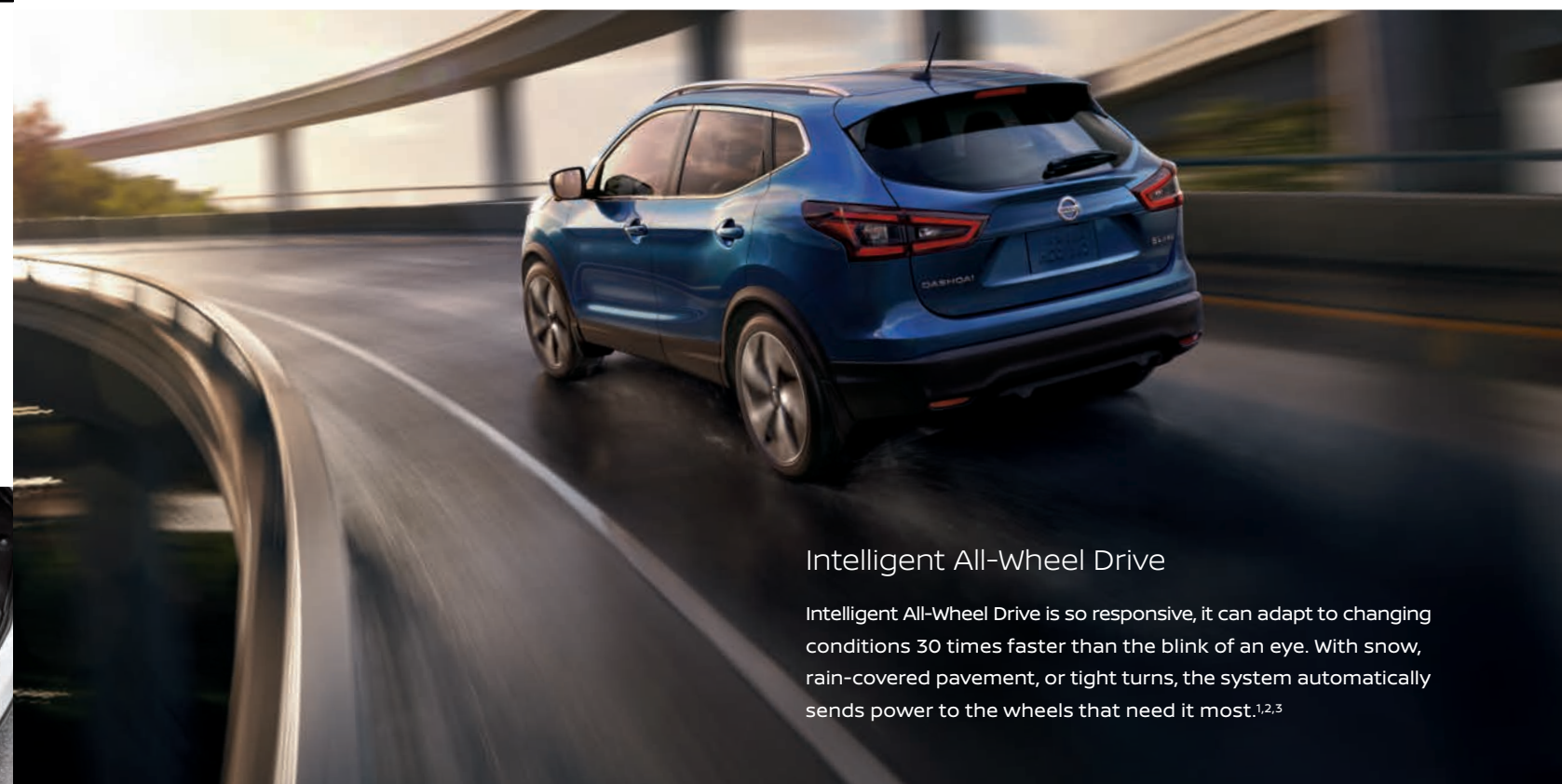
Divide-N-Hide®

Reversible cargo-floor panels adjust easily to provide multiple configurations, while the back seats fold down flat to accommodate larger gear, giving you space for your daily essentials and weekend getaways.^{2,11}



Intelligent All-Wheel Drive

Intelligent All-Wheel Drive is so responsive, it can adapt to changing conditions 30 times faster than the blink of an eye. With snow, rain-covered pavement, or tight turns, the system automatically sends power to the wheels that need it most.^{1,2,3}



A more confident, exciting,
and connected ride

Nissan Intelligent Mobility™ is forever changing how you move. You'll drive with greater awareness and can even get an assist when you need it. Everything gets even easier when you sync from your compatible smartphone to your Qashqai® and the world around you.⁴ This is the future of driving, and it's here for everyone right now.¹



An easier commute at the push of a button

ProPILOT Assist® With ProPILOT Assist, you can actually look forward to your daily drive. Push the button to activate, and this advanced system shares some of the driving tasks with you – helping you stay with the flow of traffic and even helping to keep you centred in your lane.^{2,18}

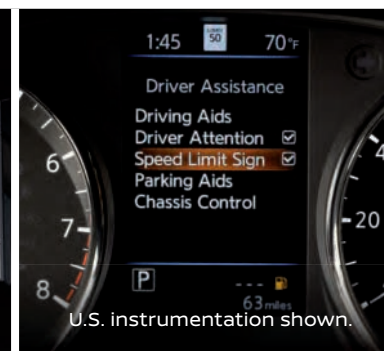


U.S. instrumentation shown.

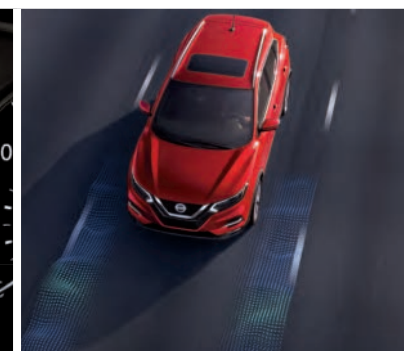
ProPILOT Assist in highway traffic Take the tedium out of stop and go. ProPILOT Assist helps your Qashqai keep a set distance from the car ahead based on the traffic flow. It can even come to a full stop and can bring you back up to speed when traffic starts moving again.^{2,18}

ProPILOT Assist on the open road No more drifting. ProPILOT Assist helps keep you centred in your lane through the straightaways and even through gentle curves.^{2,18}

Drive assist technologies have your back



U.S. instrumentation shown.



Standard Nissan Safety Shield® 360

Imagine feeling confident in almost any situation. With a suite of standard Safety Shield 360 technologies, the 2023 Qashqai can look out for you all around. This is peace of mind you can enjoy, kilometre after kilometre.¹²



INTELLIGENT EMERGENCY BRAKING WITH PEDESTRIAN DETECTION¹³



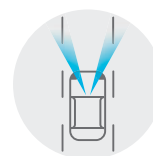
REAR AUTOMATIC BRAKING¹⁴



REAR CROSS TRAFFIC ALERT¹⁵



BLIND SPOT WARNING¹⁶



LANE DEPARTURE WARNING¹⁷



HIGH BEAM ASSIST

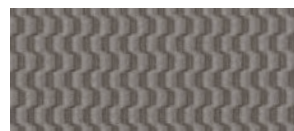
Intelligent Forward Collision Warning Qashqai is on the lookout when you can't see what's going on ahead. It watches two cars in front, monitoring your speed and distance, and when it detects sudden deceleration, it gives you a warning to slow down.¹⁹

Intelligent Around View® Monitor Keep your pride and rims intact. Intelligent Around View Monitor makes parking easy with a virtual composite 360° bird's-eye view of your Qashqai. You can select from split-screen close-ups of the front, rear, and curbside views for a better look. It also gives you an on-screen alert when it detects moving objects near your vehicle. We're looking at you, shopping cart.^{2,20,21}

Traffic Sign Recognition Missed that speed limit sign? Qashqai didn't. With Traffic Sign Recognition, Qashqai detects road signs as you drive along and will keep you up-to-date on the speed limit.^{2,22}

Intelligent Lane Intervention Qashqai helps keep you in your lane. When lane markings are clear, Intelligent Lane Intervention can detect if you're straying out of your lane and can tap the brakes to help gently guide you back.¹⁷

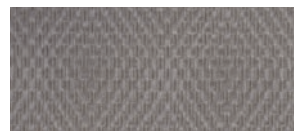
CHOOSE YOUR COLOUR AND INTERIOR



Light Grey Cloth
S



Charcoal Cloth
S



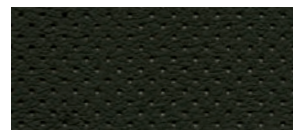
Light Grey Cloth
SV



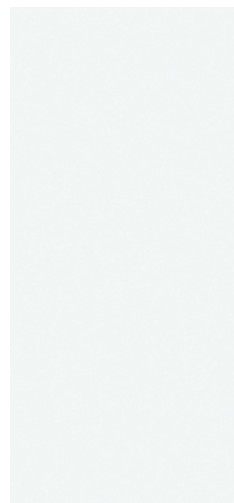
Charcoal Cloth
SV



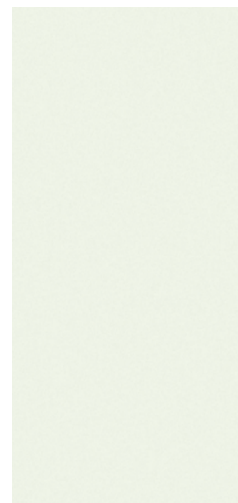
Light Grey Leather⁵
SL



Charcoal Leather⁵
SL



Glacier White QAK



Pearl White TriCoat²³ QAB

	S	SV	SL	S	SV	SL
Light Grey Cloth						
Charcoal Cloth	■				■	
Light Grey Leather ⁵						
Charcoal Leather ⁵						■



Gun Metallic²³ KAD



Monarch Orange
Metallic²³ EBB



Scarlet Ember
Tintcoat²³ NBL



Caspian Blue
Metallic²³ RBY



Magnetic Black Pearl²³ G41

	S	SV	SL	S	SV	SL	S	SV	SL	S	SV	SL	S	SV	SL
Gun Metallic ²³ KAD															
Monarch Orange Metallic ²³ EBB	■	■			■										
Scarlet Ember Tintcoat ²³ NBL															
Caspian Blue Metallic ²³ RBY	■	■							■						
Magnetic Black Pearl ²³ G41															■

■ Standard

Nissan has taken care to ensure that the colour swatches presented here are the closest possible representations of actual vehicle colours. Swatches may vary slightly due to the printing process and whether viewed in daylight, fluorescent or incandescent light. Please see the actual colours at your dealer.

GENUINE NISSAN ACCESSORIES

Every Genuine Nissan Accessory is custom-fit, custom-designed, and durability-tested. Each one is backed by Nissan's 3-year/60,000-km (whichever occurs first) limited warranty (if installed by dealer at the time of new vehicle purchase) and can be financed when installed by dealer at time of new vehicle purchase. Terms, conditions, and exclusions apply. See your Warranty Information Booklet for complete details.

A. 17" Aluminum-Alloy Wheels

Proof that the best defense is great style.

B. Chrome Rear Bumper Protector

Helps protect bumper from nicks and scratches.

C. Roof Rail Crossbars^{11,24}

Transfer the weight from your shoulders to your roof.

D. Illuminated Kick Plates

Step inside and light 'em up.

Additional Accessories:

- All-Season Floor Mats (4-piece set)
- Door Side Sill Strips
- Rear Glass Finishers
- Frameless Auto-Dimming Rearview Mirror w/ Universal Remote
- Frameless Rearview Mirror w/ Universal Remote
- And More



See your Nissan dealer for details, or go to accessories.nissan.ca

BUYING AND OWNING

Finance Options Through Nissan Canada Finance, we offer many attractive lease and loan options that can be tailored to your individual needs. Please visit our website [Nissan.ca/finance](https://nissan.ca/finance) to explore all of the options available. We have also made it easy to pre-qualify online. With our flexible options, driving home a new Nissan has never been easier. Consult your local Nissan Dealership for complete details.

No-Nonsense Warranty Every 2023 Nissan is covered by a 3 year/60,000 km²⁵ Comprehensive New Vehicle Warranty, a 5 year/100,000 km²⁵ Powertrain Warranty, an 8 year/130,000 km²⁵ Emission OBD Warranty on selected components, and a 5 year/unlimited km Corrosion Perforation Warranty. As a Nissan owner, you'll also receive a 3 year Roadside Assistance program available to you 24 hours a day. Terms, conditions, and exclusions apply. See your Warranty Information Booklet for complete details.

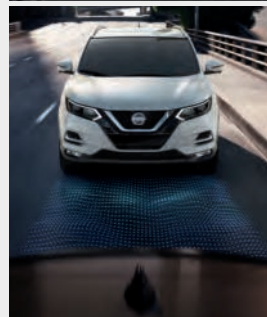
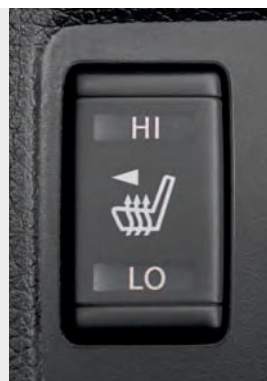
Added Security Plan (ASP) For ultimate peace of mind, consider the Nissan Added Security Plan. It's our commitment to be there for you, and to help you leave your worries behind. Different plans, available for both purchased and leased vehicles, let you tailor the coverage to your driving habits.

Security+Plus® Prepaid Maintenance Plan The smart choice when it comes to maintaining your new Nissan. Honoured at all participating Nissan Dealers in Canada and the U.S., your vehicle is cared for by factory-trained technicians using Genuine Nissan Parts. And best of all, there's no worrying about price increases on parts or service in the future. A variety of plans are available. Ask your Dealer for details.

CHOOSE YOUR TRIM LEVEL

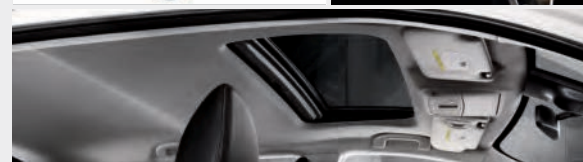
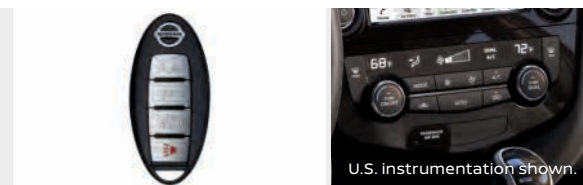
S

- 2.0-litre DOHC 16-valve 4-cylinder engine
- Xtronic CVT® (Continuously Variable Transmission) with manual shift mode
- Front-Wheel Drive (FWD)
- Available Intelligent All-Wheel Drive (AWD)³
- Cruise control
- Intelligent Forward Collision Warning¹⁹
- Intelligent Emergency Braking with Pedestrian Detection¹³
- Lane Departure Warning¹⁷
- Rear Automatic Braking¹⁴
- Blind Spot Warning¹⁶
- Rear Cross Traffic Alert¹⁵
- Rear Sonar System²⁶
- High Beam Assist
- Intelligent Lane Intervention¹⁷
- Active Ride Control
- Intelligent Trace Control²⁷
- Intelligent Engine Brake
- Vehicle Dynamic Control® (VDC®)²⁸ with Traction Control System (TCS)
- 17" Aluminum-alloy wheels
- P215/60R17 All-season tires
- LED Daytime Running Lights
- Rear seat heating/cooling vents
- Automatic on/off headlights
- Apple CarPlay® integration⁸
- Android Auto™ compatibility⁸
- Rear spoiler
- PTC heater
- Power heated outside mirrors with LED turn signal indicators
- Advanced Drive-Assist Display²⁹
- NissanConnect® 178 mm (7") colour touch-screen display⁷
- Siri® Eyes Free⁸
- Hands-free Text Messaging Assistant⁹
- Bluetooth® Hands Free Phone System³⁰
- AM/FM/CD audio system with four speakers
- Streaming Audio via Bluetooth®³⁰
- SiriusXM with 3-month subscription included³¹
- One USB-A port⁴
- RearView Monitor³²
- Integrated Key with remote keyless entry
- Tilt and telescoping steering column
- Illuminated steering wheel-mounted controls
- Variable intermittent front windshield and intermittent rear window wipers
- Rear Door Alert³³
- 12-volt DC power outlet⁴
- Six cargo tie-down hooks¹¹
- Cargo cover
- 6-way manual driver's seat
- Quick Comfort® heated front seats
- 60/40-split fold-down 2nd-row seats
- Cloth seat trim
- Tire Pressure Monitoring System (TPMS) with Easy-Fill Tire Alert^{34,35}
- Nissan Advanced Airbag System³⁶



SV INCLUDES S EQUIPMENT PLUS:

- Intelligent All-Wheel Drive (AWD)³
- Electronic parking brake
- ProPILOT Assist®¹⁸
 - Steering Assist
 - Intelligent Cruise Control³⁷ with Full Speed Range and Hold
- Power sliding glass moonroof
- Silver-finished roof rails¹¹
- Dual Zone Automatic Temperature Control
- Heated leather-wrapped steering wheel
- Leather-wrapped shift knob
- Nissan Intelligent Key® with Push Button Ignition
- Remote Engine Start System⁶ with Intelligent Climate Control
- AM/FM/CD audio system with six speakers
- Rear-seat centre armrest with cup holders
- Dual illuminated visor vanity mirrors



SL INCLUDES SV EQUIPMENT PLUS:

- 19" Aluminum-alloy wheels
- P225/45R19 All-season tires
- Intelligent Driver Alertness³⁸
- Traffic Sign Recognition²²
- Nissan Door to Door Navigation with Premium Traffic¹⁰
- Voice Recognition¹⁰
- SiriusXM Traffic and Travel Link with 3-month trial access³¹
- NissanConnect® Services powered by SiriusXM with trial access to 3-year Select and 6-month Premium Plus packages⁸
- Intelligent Around View® Monitor²¹
- 8-way power driver's seat, including 2-way lumbar support
- Leather-appointed seats
- Front seatback pockets
- Divide-N-Hide® cargo system¹¹

KEY AVAILABLE PACKAGE:

- Platinum Package



PLATINUM PACKAGE | SL

- LED headlights
- Fog lights
- Bose Premium Audio System with subwoofer
- Auto-dimming inside mirror with HomeLink® universal garage-door opener
- Memory System — driver's seat and outside mirrors
- 4-way power front-passenger's seat



SPECIFICATIONS

Engine	S	SV	SL
2.0-litre DOHC 16-valve 4-cylinder engine	■	■	■
— Horsepower — 141 HP @ 6,000 rpm	■	■	■
— Torque — 147 lb.-ft. @ 4,400 rpm	■	■	■
Continuously Variable Valve Timing Control System (CVTCS) on intake and exhaust valves	■	■	■
Nissan Direct Ignition System with platinum-tipped spark plugs	■	■	■
Eco Mode	■	■	■
Drivetrain			
Front-Wheel Drive (FWD)	■		
Intelligent All-Wheel Drive (AWD) ³	□	■	■
Xtronic CVT® (Continuously Variable Transmission) with manual shift mode	■	■	■
Brakes			
4-wheel vented disc brakes	■	■	■
4-wheel Anti-lock Braking System (ABS)	■	■	■
Electronic Brake force Distribution (EBD)	■	■	■
Brake Assist ³⁹	■	■	■
Foot-style parking brake	■		
Electronic parking brake		■	■
Suspension/Chassis Bracing/Steering			
Independent strut front suspension	■	■	■
Independent multi-link rear suspension	■	■	■
Front and rear stabilizer bars	■	■	■
Electric power steering with Sport Mode	■	■	■
Driver Assistance Technologies			
Cruise control	■	■	■
Intelligent Cruise Control ³⁷		■	■
ProPILOT Assist ¹⁸		■	■
— Steering Assist		■	■
— Intelligent Cruise Control ³⁷ with Full Speed Range and Hold		■	■
Intelligent Emergency Braking with Pedestrian Detection ¹³	■	■	■
Rear Automatic Braking ¹⁴	■	■	■
Intelligent Forward Collision Warning ¹⁹	■	■	■
Lane Departure Warning ¹⁷	■	■	■
Intelligent Lane Intervention ¹⁷	■	■	■
Blind Spot Warning ¹⁶	■	■	■
Rear Cross Traffic Alert ¹⁵	■	■	■
RearView Monitor ³²	■	■	■
Intelligent Around View® Monitor ²¹			■
Rear Sonar System ²⁶	■	■	■
High Beam Assist	■	■	■
Intelligent Trace Control ²⁷	■	■	■
Active Ride Control	■	■	■
Intelligent Engine Brake	■	■	■
Hill start assist	■	■	■
Vehicle Dynamic Control® (VDC®) ²⁸ with Traction Control System (TCS)	■	■	■
Traffic Sign Recognition ²²			■
Intelligent Driver Alertness ³⁸			■
Wheels/Tires			
17" x 7.0" Aluminum-alloy wheels	■	■	
19" x 7.0" Aluminum-alloy wheels			■

Wheels/Tires (continued)	S	SV	SL
P215/60R17 All-season tires	■	■	
P225/45R19 All-season tires			■
Exterior Features			
LED Daytime Running Lights	■	■	■
Halogen headlights with LED signature	■	■	■
LED headlights			P
Automatic on/off headlights	■	■	■
Fog lights			P
Power heated outside mirrors with LED turn signal indicators	■	■	■
Silver-finished roof rails ¹¹		■	■
Rear spoiler	■	■	■
Black wheel arch mouldings and rocker panels	■	■	■
Power sliding glass moonroof		■	■
Comfort/Convenience			
PTC heater	■	■	■
Dual Zone Automatic Temperature Control		■	■
Rear seat heating/cooling vents	■	■	■
Power windows with driver's one-touch auto-up/down feature	■	■	■
Power door locks with auto-locking feature	■	■	■
Integrated Key with remote keyless entry			
Nissan Intelligent Key® with Push Button Ignition		■	■
Remote Engine Start System ⁶ with Intelligent Climate Control		■	■
Tilt and telescoping steering column	■	■	■
Illuminated steering wheel-mounted controls	■	■	■
Variable intermittent windshield wipers	■	■	■
Intermittent rear window wiper	■	■	■
Rear Door Alert ³³	■	■	■
12-volt DC power outlet ⁴	■	■	■
Sun visors with vanity mirrors and extensions	■	■	■
Dual illuminated visor vanity mirrors		■	■
Overhead map lights	■	■	■
Overhead sunglasses storage	■	■	■
Front centre console		■	■
Rear-seat centre armrest with cup holders		■	■
Front seatback pockets			■
Four cup holders and four bottle holders		■	■
Six cargo tie-down hooks ¹¹	■	■	■
Divide-N-Hide® cargo system ¹¹			■
Cargo cover	■	■	■
Auto-dimming inside mirror with HomeLink® universal garage-door opener			P
Seating/Appointments			
6-way manual driver's seat	■	■	
8-way power driver's seat, including 2-way lumbar support	■	■	■
4-way manual front-passenger's seat			P
4-way power front-passenger's seat			■
60/40-split fold-down 2nd-row seats	■	■	■
Cloth seat trim	■	■	
Leather-appointed seats			■
Memory System — driver's seat and outside mirrors			P
Quick Comfort® heated front seats	■	■	■

Seating/Appointments (continued)	S	SV	SL
Heated leather-wrapped steering wheel		■	■
Leather-wrapped shift knob		■	■
Infotainment			
Advanced Drive-Assist Display ²⁹	■	■	■
NissanConnect® 178 mm (7") colour touch-screen display ⁷	■	■	■
Nissan Door to Door Navigation with Premium Traffic ¹⁰			■
Voice Recognition ¹⁰			■
NissanConnect® Services powered by SiriusXM with trial access to 3-year Select and 6-month Premium Plus packages ⁸			■
Apple CarPlay® integration ⁸	■	■	■
Android Auto™ compatibility ⁸	■	■	■
SiriusXM Traffic and Travel Link with 3-month trial access ³¹			■
Hands-free Text Messaging Assistant ⁹	■	■	■
Siri® Eyes Free ⁸	■	■	■
Bluetooth® Hands Free Phone System ³⁰	■		
AM/FM/CD audio system with four speakers		■	■
AM/FM/CD audio system with six speakers		■	P
Bose Premium Audio System with subwoofer			
MP3/WMA CD playback capability	■	■	■
Auxiliary audio input jack ⁴	■	■	■
One USB-A port ⁴	■	■	■
Streaming Audio via Bluetooth® ³⁰	■	■	■
SiriusXM with 3-month subscription included ³¹	■	■	■
Radio Data System (RDS)	■	■	■
Speed-sensitive volume control	■	■	■
Illuminated steering wheel-mounted audio controls	■	■	■
Safety/Security			
Nissan Advanced Airbag System with dual-stage supplemental front airbags with occupant classification sensors ³⁶	■	■	■
Driver and front-passenger supplemental knee airbags ³⁶	■	■	■
Driver and front-passenger seat-mounted side-impact supplemental airbags ³⁶	■	■	■
Rear passenger door-mounted side-impact supplemental airbags for outboard occupants ³⁶	■	■	■
Roof-mounted curtain supplemental airbags with rollover sensor for side-impact head protection for front and rear-seat outboard occupants ³⁶	■	■	■
3-point ELR driver and passenger seat belt system	■	■	■
LATCH System (Lower Anchors and Tethers for Children)	■	■	■
Tire Pressure Monitoring System (TPMS) with Easy-Fill Tire Alert ^{34,35}	■	■	■

■ Standard □ Optional P Part of SL Platinum Package

Nissan's environmental action plan focuses on several key areas. In addition to increasing production of Zero Tailpipe Emission vehicles like the 100% electric LEAF,[®] we're improving fuel efficiency across our lineup, and reducing the environmental impact of manufacturing through energy-efficient practices in our plants.



DIMENSIONS/CAPACITIES/WEIGHTS/FUEL

Dimensions		
Exterior — mm (inches)		
Wheelbase	2646 (104.2)	
Overall length	4388 (172.8)	
Overall width	1838 (72.3)	
Overall height (without roof rails/with roof rails)	1587 (62.5) / 1610 (63.4)	
Track width (front/rear)	1585 (62.4) / 1580 (62.2)	
Aerodynamics — Cd		
Drag coefficient	0.33	
Interior — mm (inches)		
Head room without moonroof (front/2nd row)	1006.4 (39.6) / 973.2 (38.3)	
Head room with moonroof (front/2nd row)	984.8 (38.8) / 976.8 (38.5)	
Leg room (front/2nd row)	1087 (42.8) / 848.1 (33.4)	
Hip room (front/2nd row)	1355.2 (53.4) / 1190.4 (46.9)	
Shoulder room (front/2nd row)	1437.9 (56.6) / 1413.6 (55.7)	
Capacities		
Seating capacity	5	
Interior passenger volume without moonroof — L (cu. ft.)	2718 (96)	
Interior passenger volume with moonroof — L (cu. ft.)	2670 (94.3)	
Cargo capacity with 2nd row upright — L (cu. ft.) ¹¹	648 (22.9) 566 (20) with moonroof	
Cargo capacity with rear seats folded down — L (cu. ft.) ¹¹	1730 (61.1) 1500 (53) with moonroof	
Fuel tank — L (Imp. gal.)	55 (12.1)	
Curb Weights — kg (lbs.)		
Base Total	S	SV
FWD (CVT)	1500 (3306)	—
AWD (CVT)	1555 (3428)	1568 (3457)
2023 Fuel Consumption Estimates — L/100 km (MPG) ⁴⁰		
City/Highway/Combined		
FWD (CVT)	8.6 (33) / 7.3 (39) / 8.0 (35)	
AWD (CVT)	9.0 (31) / 7.5 (38) / 8.3 (34)	

Actual mileage may vary with driving conditions — use for comparison only.

NISSAN QASHQAI®

Isn't it time you were passionate about the vehicle you drive?
Welcome to the 2023 Qashqai.®

Follow Nissan Canada on:

